

The Conetics *ProjectRoom*

Login with Mac computers

September 2005 edition

R 6.0

All rights reserved. All materials contained in this user guide, including text, graphics, icons, images and translations, are the property of Conetics AG and are protected by international copyright laws. The compilation of all content in this user guide is the exclusive property of Conetics AG. You may not reproduce, modify, distribute or republish materials contained in this guide without our prior written permission. You may not alter or remove any trademark, copyright or other notice from copies of content.

However, we appreciate suggestions for further improvement and enhancement anytime.

Edition: September 2005

©2001 - 2005 Conetics AG
Aachener Strasse 217
50931 Köln (Cologne)
Germany

Tel.: +49-221-9410191-0
Fax: +49-221-9410191-356

<http://www.conetics.com>
info@conetics.com

Login (Mac)

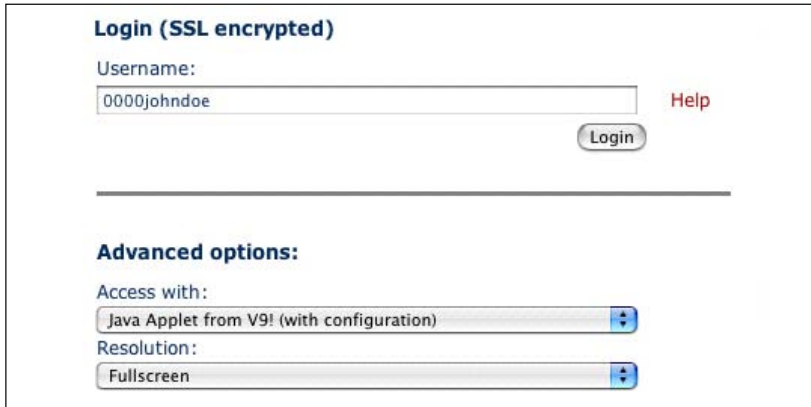
Logging on to the Conetics *ProjectRoom* with Mac computers

Your Mac computer uses the Java Applet to access the Conetics *ProjectRoom*.

Start your browser and enter the www.conetics.com webpage. Click on the  button.

- Click on the link 'Show advanced login options'.

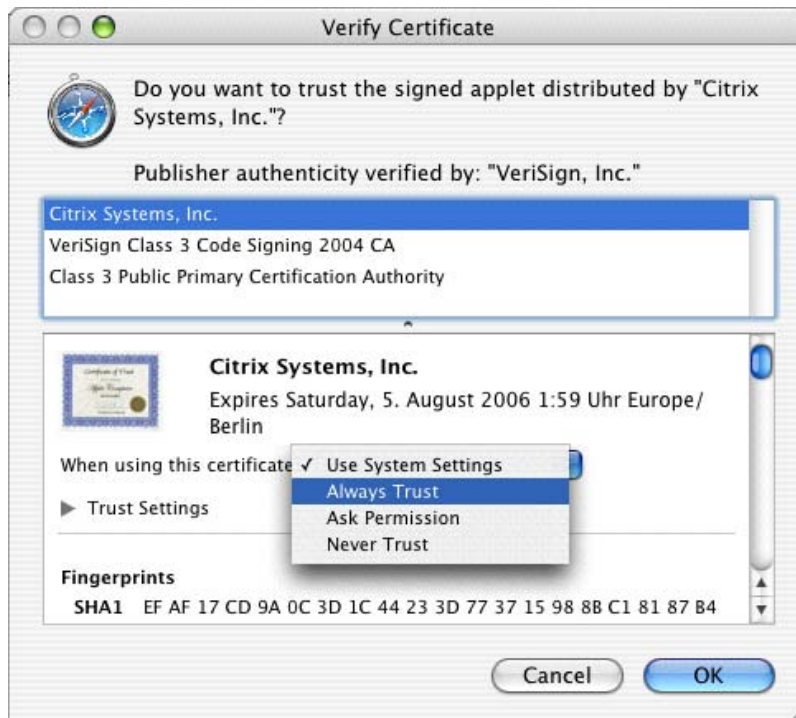
Click on 'Help' to view further details.



- Enter your user name and select the above settings when you enter the platform for the first time (if you do not want to select 'Fullscreen' mind the subsequent notes in brackets). Select the 'Java Applet' option.

Note: If you allow the system to save the configuration via cookies, your user name and the advanced login options will be automatically applied for subsequent logins.

- Click the 'Login' button. The prompt-for-confirmation function will pop up a dialogue box with the following content:



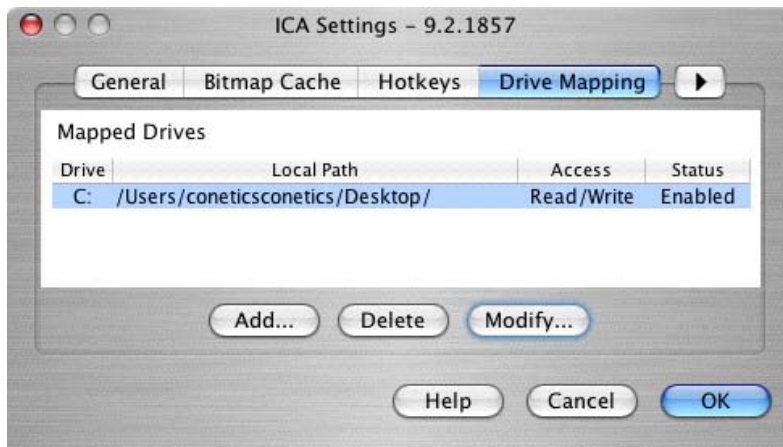
Select 'Always Trust' under 'Verify Certificate' and confirm with 'OK' in order to facilitate the launch of the Java applet for subsequent project room sessions.

Login (Mac)

- The following dialogue box will be displayed shortly after the launch of the java applet (if you did not select 'Fullscreen' earlier on, scroll down to the bottom of the page until you can see the 'Settings' button):



- Click on 'Settings' to open the dialogue box 'ICA Settings'. Select 'Drive Mapping'; the system will now display the drive name, the local path on your computer, the access rights and the status.



- Click on 'Add...' to modify to the drive mappings.

Login (Mac)



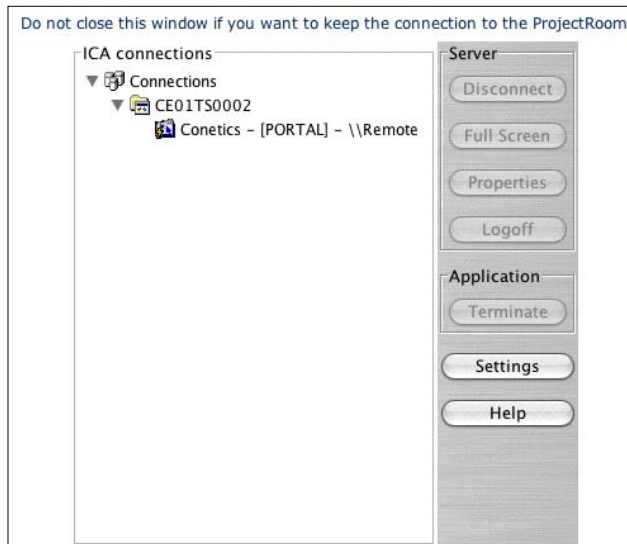
- Select a drive name in the upper click box.
Note: only enter the letters C to K as further letters are default letters of the Conetics server.
- Please enter the following local path: /Users/User name (computer)/Desktop. Click on 'Browse...' if your user name is unknown.



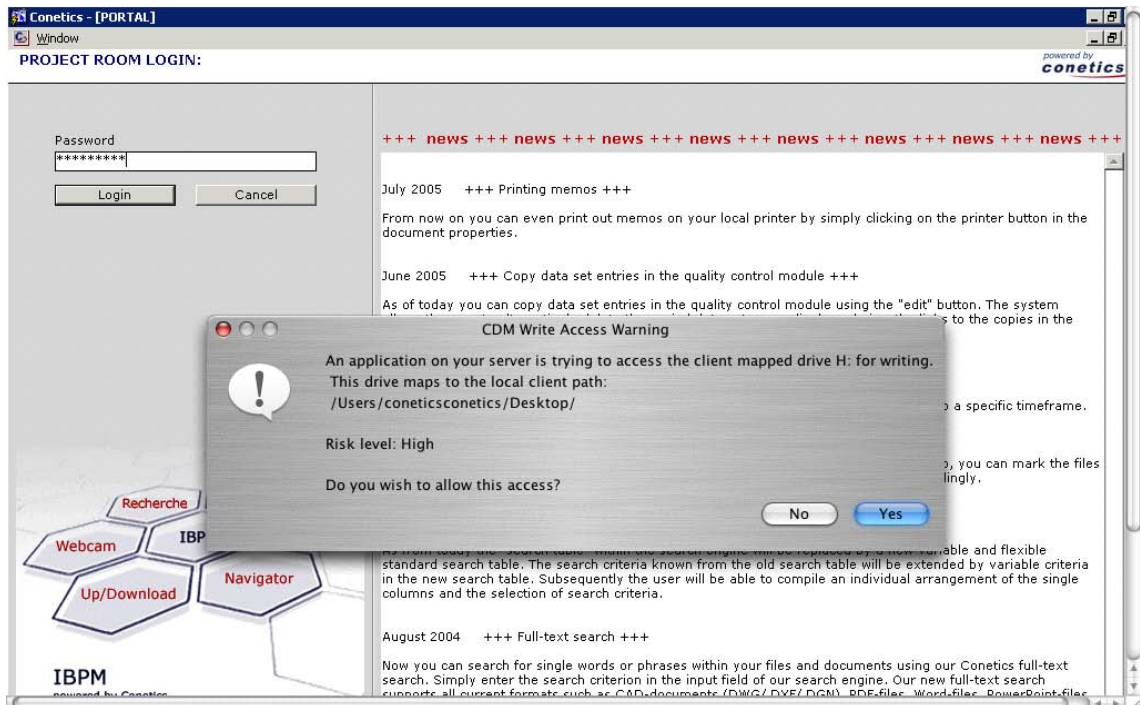
- Select the user name in the upper dialogue box. Mark 'Desktop' in the list and click on 'OK' to adopt the new path.
- Select 'Read/Write' to facilitate data transfers (up-/ downloads) between the *ProjectRoom* and your local computer.
- Tick the box 'Enable Drive' in order to activate the selection.
- Confirm your selection with 'OK'.
- After changing the settings close the dialogue box ICA-settings with 'OK'.

Login (Mac)

- The status of the connection to the *ProjectRoom* will be automatically displayed in the dialogue box 'ICA-connection' (only under 'Fullscreen'; if you did not select 'Fullscreen' start the connection by clicking on the CitrixMetaFrame icon).



- Cancel the connection and logon to the system via the Conetics login page. The system will now establish a new connection to the *ProjectRoom* under consideration of the new settings.
- Confirm the following two safety queries with 'Yes' in order to allow the system read and write access to the local hard drives of your computer.



- Enter your password and click on 'Login' to start a new session.